

FLANGE TYPE THERMOWELLS

Technical Data

Welded type: WSF, WLF

Drilled bar stock type: BSF, BLF, BTF, BTLF, BPSF, BPLF

Material: SS304, SS316, SS316L, Monel, Hastelloy C 276, Brass, Carbon Steel, Titanium (special material available upon request)

Process connection: 1/2" ~ 4" flange available, flange rating— ANSI, DIN, JIS available (special flange upon request)

Instrument connection: 1/2"NPT, 3/4" NPT Female available (special thread upon request)

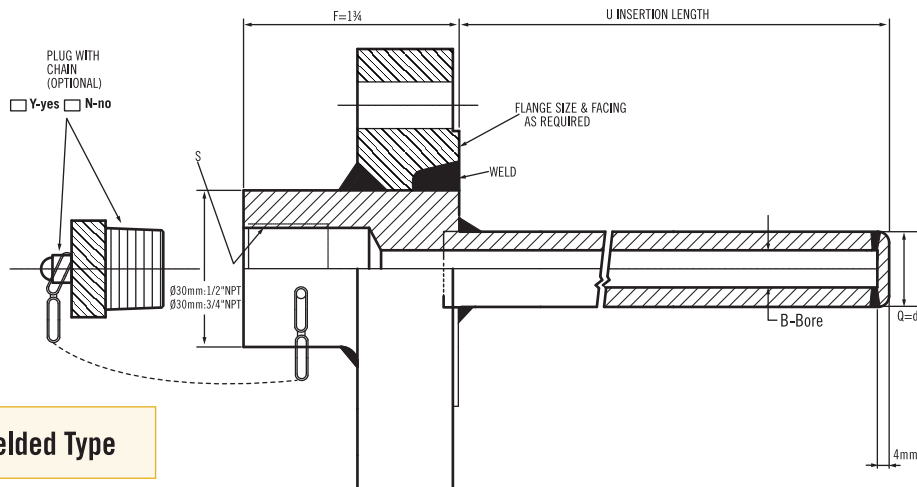


Flange Wells Series

* F: Length is suitable for flange size 3/4", 1", 1 1/2", 2", and flange rating 150# & 300#.

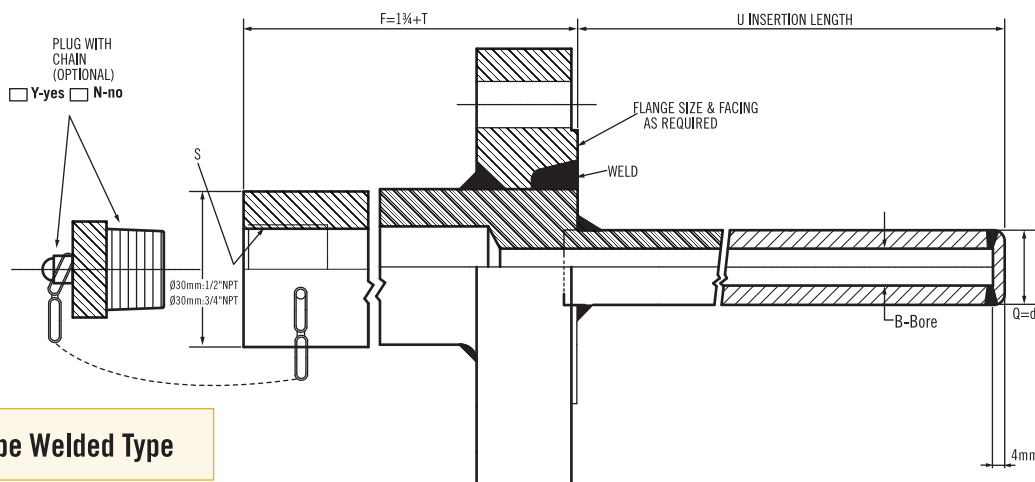
Other size and rating (F) length is by makers standard.

Model : WSF(Welded Standard Flange Type)



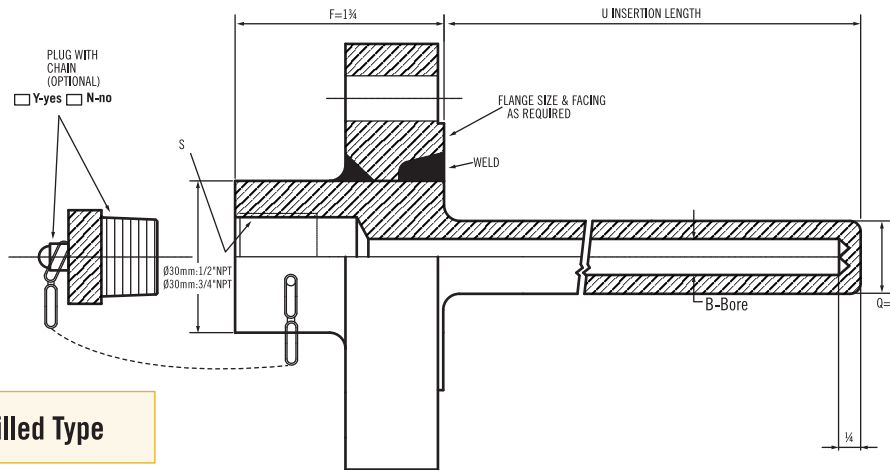
Tube Welded Type

Model : WLF(Welded Lag Flange Type)



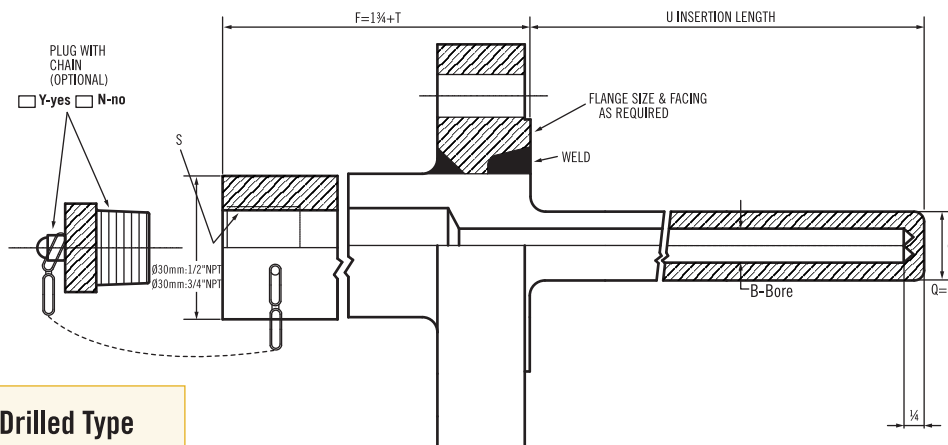
Tube Welded Type

Model : BSF(Straight Standard Flange Type)



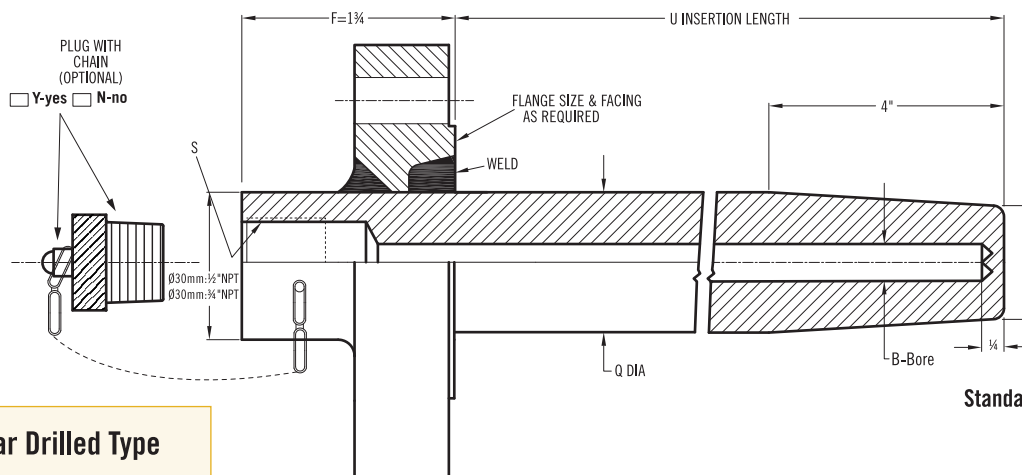
Bar Drilled Type

Model : BLF(Straight Lag Extension Flange Type)



Bar Drilled Type

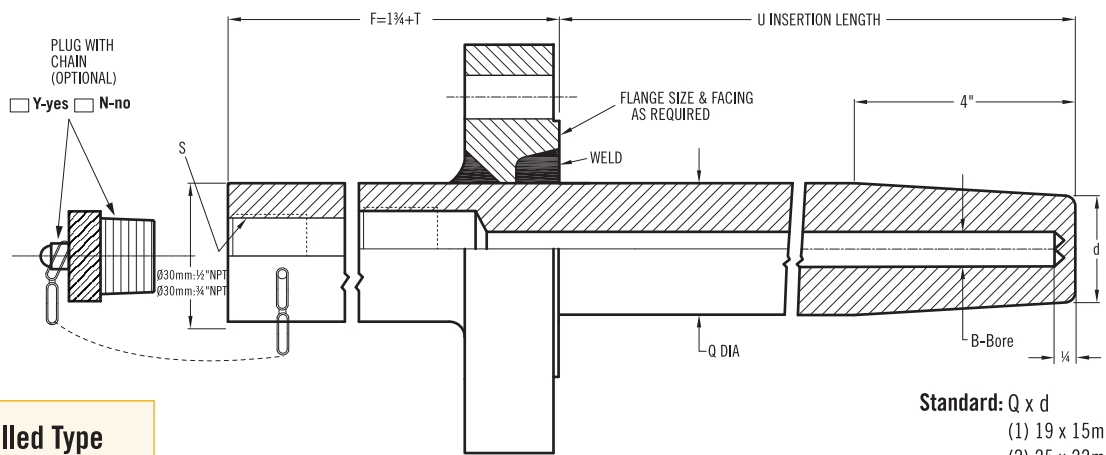
Model : BTF(Tapered Standard Flange Type)



Bar Drilled Type

Standard: Q x d
 (1) 19 x 15mm
 (2) 25 x 22mm
 (3) 22 x 19mm

Model : BTLF(Tapered Lag Extension Flange Type)

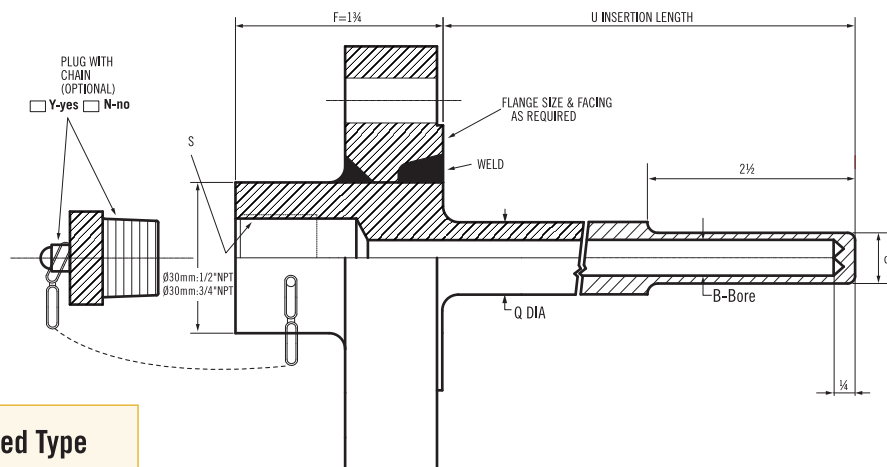


Bar Drilled Type

Standard: Q x d

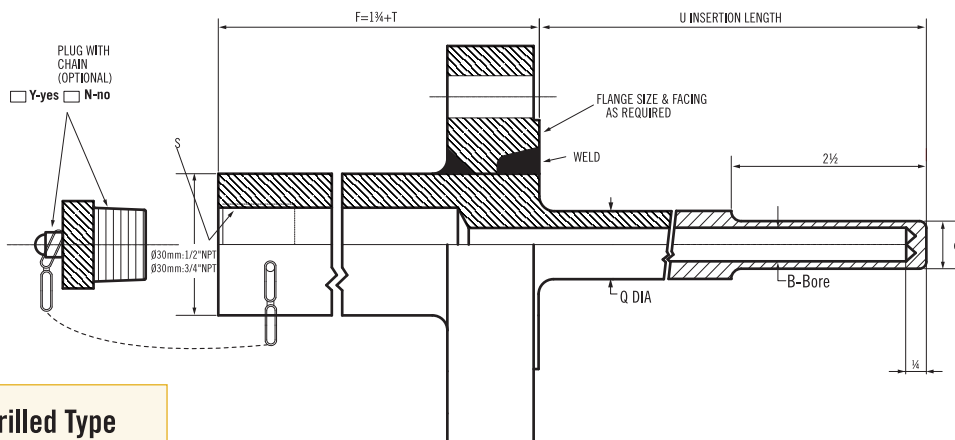
- (1) 19 x 15mm
- (2) 25 x 22mm
- (3) 22 x 19mm

Model : BPSF(Stepped Standard Flange Type)



Bar Drilled Type

Model : BPLF(Stepped Lag Extension Flange Type)



Bar Drilled Type

Ordering Information

Model	Configuration Style								
	WSF	WLF	BSF	BLF	BTF	BTLF	BPSF	BPLF	
↓	Code	Material							
	CS	Carbon Steel		MO	Monel				
	S1	304 Stainless Steel		HC	Hastelloy C276				
	S2	316 Stainless Steel		Ti	Titaninum				
	S3	316L Stainless Steel		OP	Option (please indicate material)				
	↓	Code	Process Flange Size						
			(1) ½" (2) ¾" (3) 1" (4) 1½" (5) 2" (6) 2½" (7) 3" (8) 4" (9) option (please indicate size)						
	↓	Code	Flange Rating						
		A	150#	E	1500#	I	PN25	M	JIS20K
		B	300#	F	2500#	J	PN40	O	option
		C	600#	G	PN10	K	JIS5K		
		D	900#	H	PN16	L	JIS10K		
↓	Code	S-Instrument Connection							
		(A) ½"NPT Female (B) ¾"NPT Female (O) option							
↓	Code	Lag Length "T"							
	No	0	T6	6"					
	T3	3"	Tn	option (please indicate length)					
↓	Code	"Q" Diameter (mm)							
		(1) 25 (2) 22 (3) 19 (4) option (5) without Q							
↓	Code	"d" Diameter (mm)							
		(1) 22 (2) 19 (3) 15 (4) option							
↓	Code	"B" BORE diameter							
		(1) ø6 (2) ø7 (3) ø8 (4) ø9 (5) ø10 (0) option							
↓	Code	"U" Insertion Length							
		Fill in the requested length: e.g. 300mm=300u							
↓	Code	Plug with Chain							
	Y	Yes							
	N	No							
								Complete Ordering Code	

WWW.NEW-FLOW.COM • TEL: 886-7-8135500 • FAX: 886-7-8225588 • Email: info@new-flow.com

TEMPERATURE